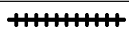


BODY PANEL SEALING AREAS

HINT:

- 1) Prior to applying body sealer, clean the area with a rag soaked in grease, wax and silicone remover.
- 2) If weld-through primer was used, first wipe off any excess and coat with anti-corrosion primer before applying body sealer.
- 3) Wipe off excess body sealer with a rag soaked in a grease, wax and silicone remover.
- 4) If body sealer is damaged by peeling, cracks, etc., be sure to repair as necessary.

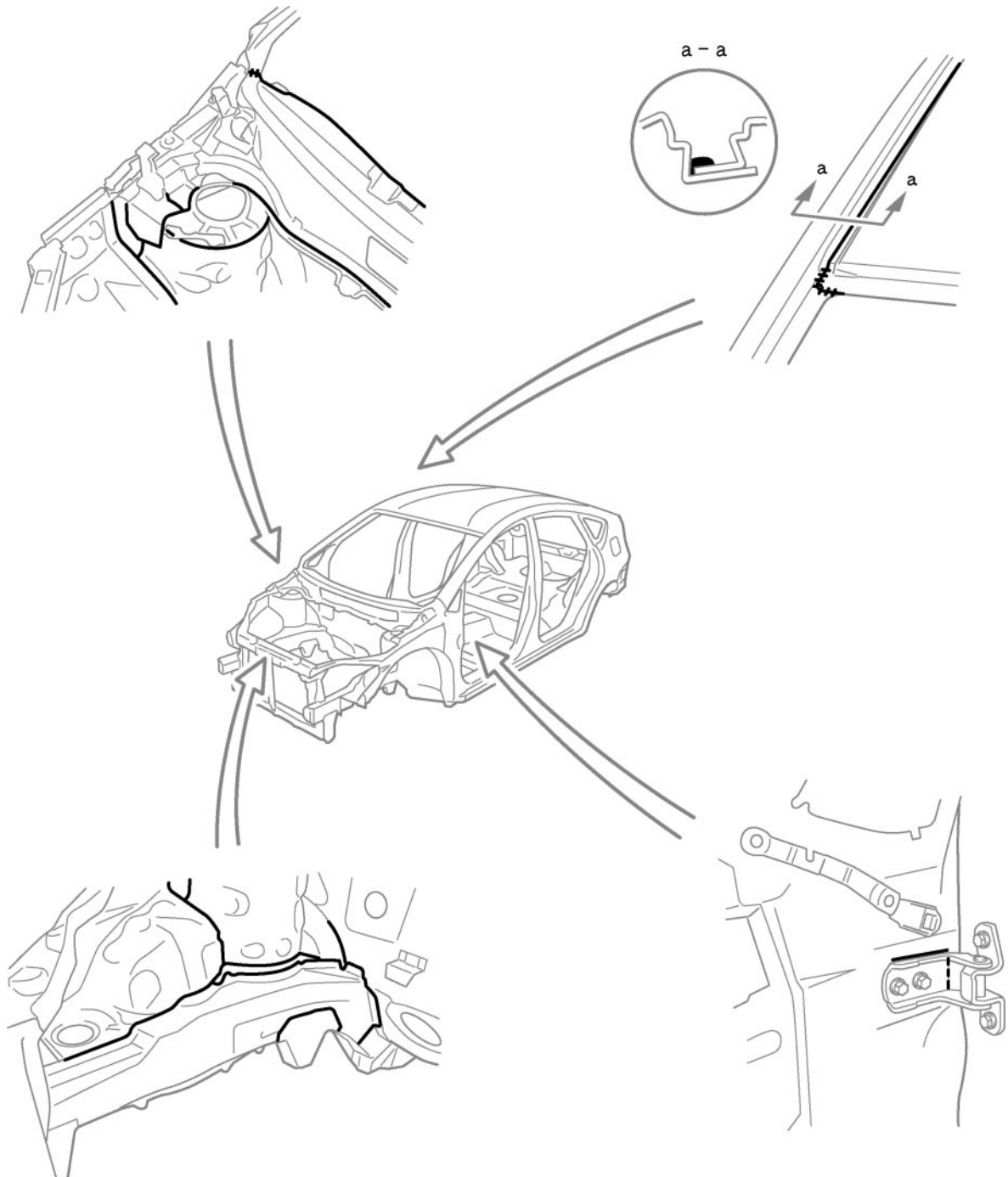


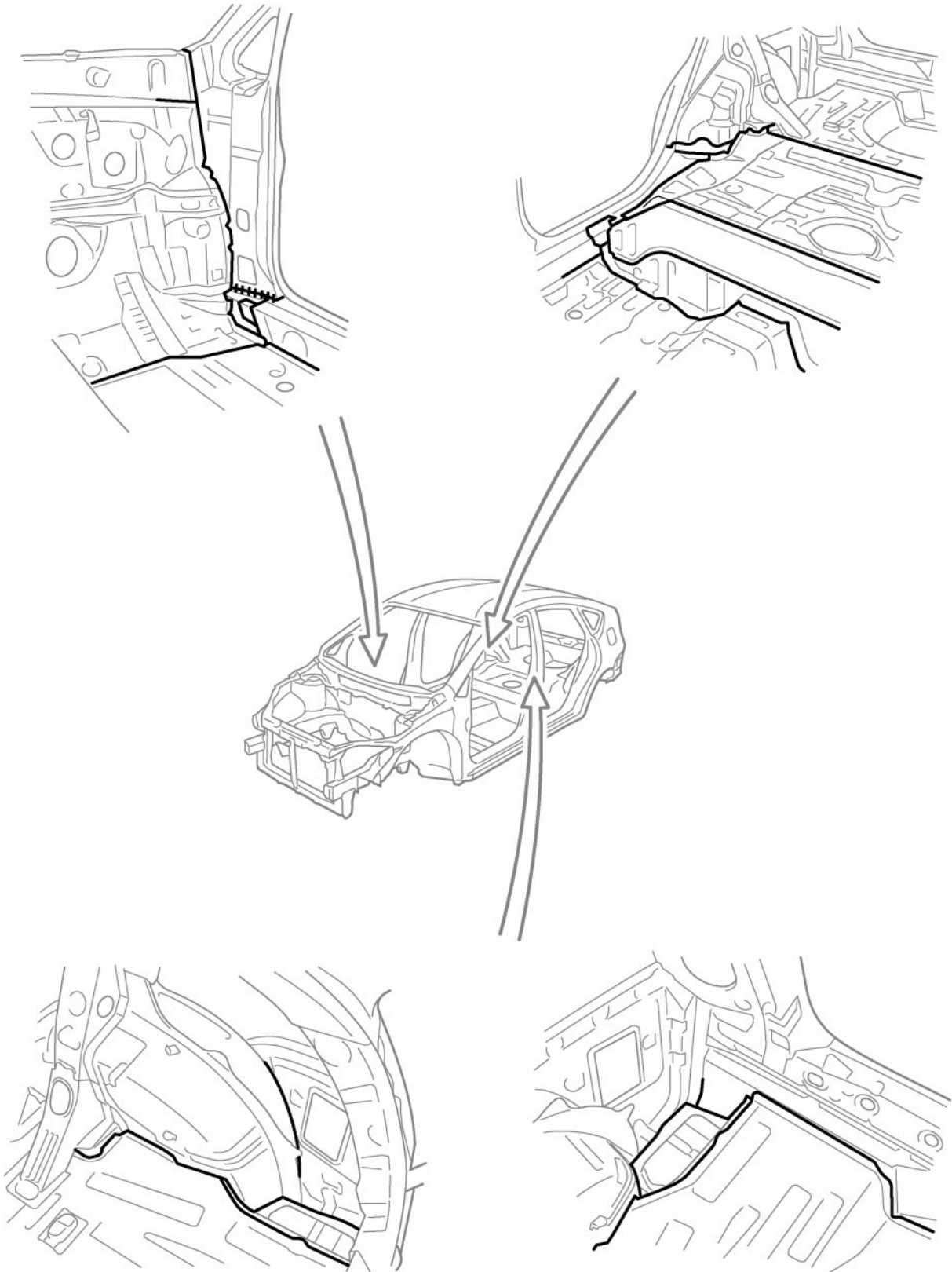
Flat Finishing

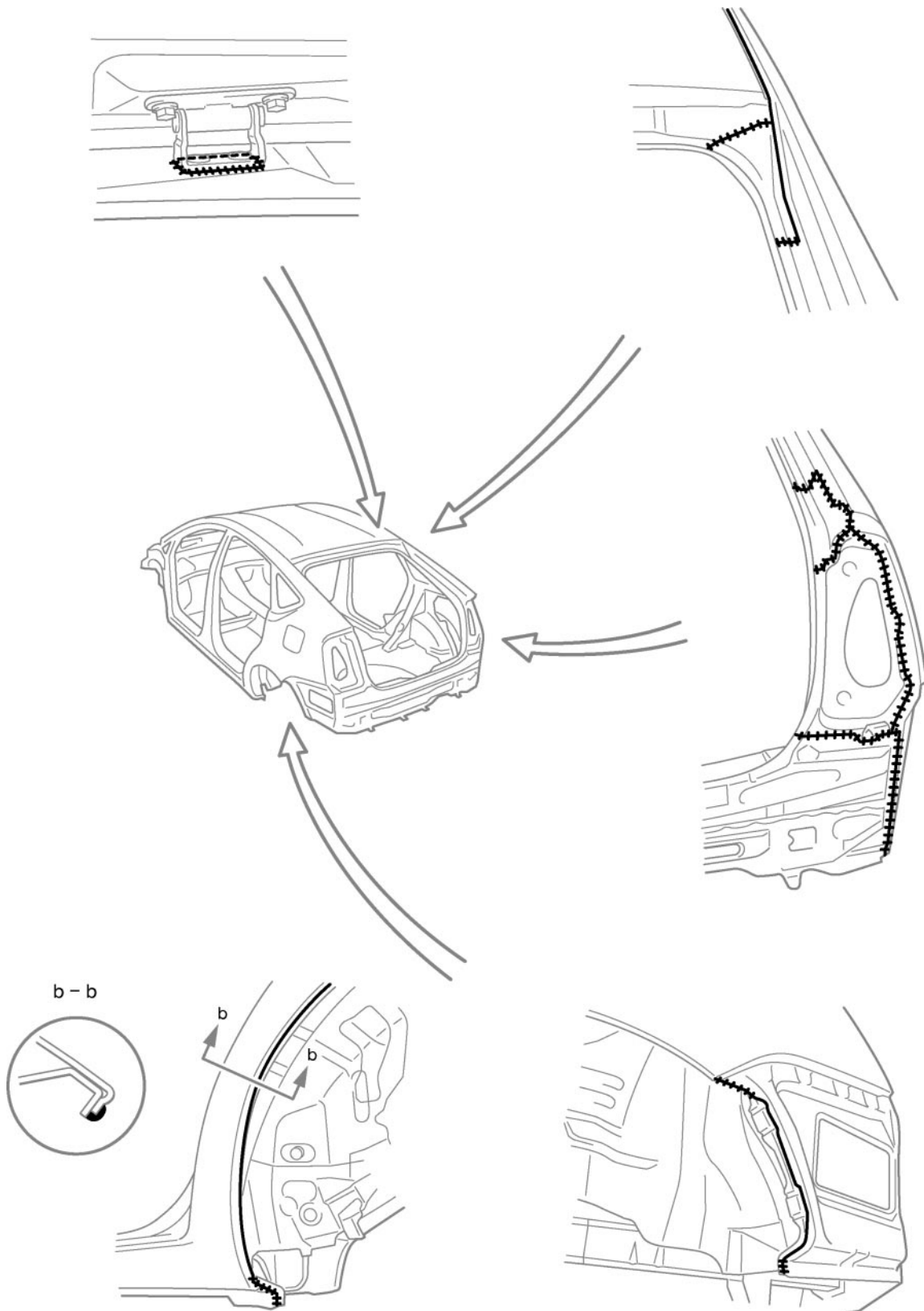


No Flat Finishing

1. ENGINE COMPARTMENT



2. INSIDE

3. REAR LUGGAGE COMPARTMENT

4. DOOR PARTS

